



## ***KOLKATA MARY WARD SOCIAL CENTRE***

<b>Contact Person:</b>	<b><i>KMWSC Director Sister Monica Suchiang</i></b>
<b>Mobile Number</b>	<b><i>98740 51089</i></b>
<b>Phone:</b>	<b><i>(033)2227-0229</i></b>
<b>Email:</b>	<b><i><a href="mailto:kmwscloreto@gmail.com">kmwscloreto@gmail.com</a></i></b>
<b>Main Office address:</b>	<b><i>1, Convent Lane, Tangra, Kolkata- 700015</i></b>

***West Bengal Ravaged by Cyclone  
Amphan***



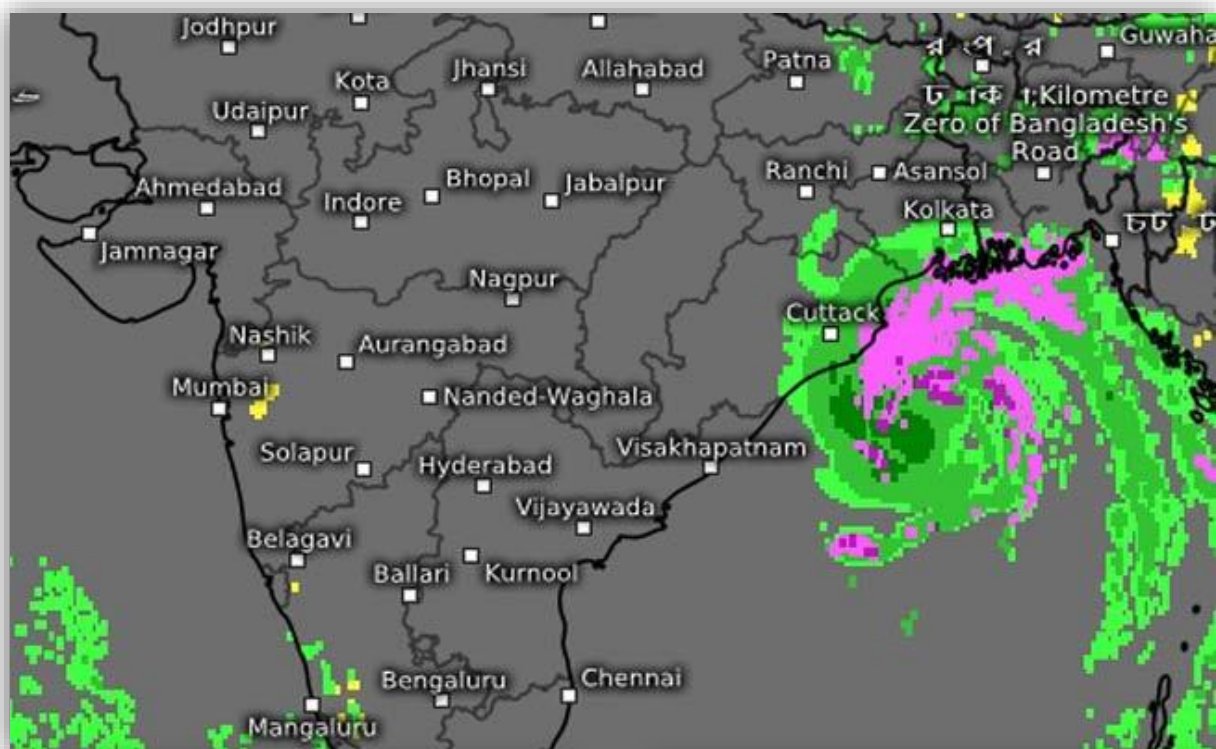
### About the organisation:

Kolkata Mary Ward Social Centre (KMWC) is the social service wing of Loreto South Asia congregation. The Organisation has been serving the underprivileged, marginalised, deprived and migrant sections of the society for over two decades, irrespective of economic, social, backgrounds and religious beliefs. Post registration the KMWC has completed its 5 years of operation and currently implementing 11 projects in West Bengal and Nawada District in Bihar.

### Cyclone Amphan

On 20 May, 2020 the monstrous cyclone made landfall at around 20 km East of Sagar Island in the Indian Sunderbans in West Bengal. This century's strongest cyclone in the Bay of Bengal wrecked havoc in large parts of the state and devastated Kolkata in a way that was not seen in many decades. On the same day, West Bengal also recorded 3 more COVID-19 deaths and 142 additional positive cases.

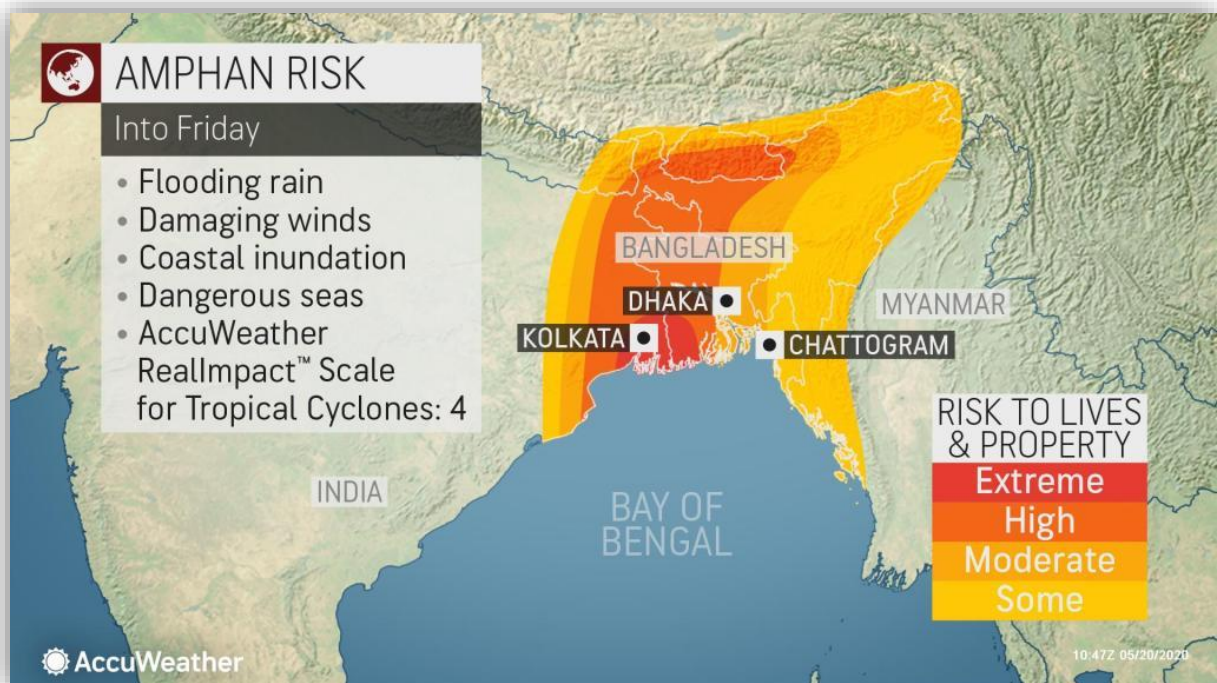
As thousands of trees were uprooted in the city razing a substantial amount of property to the ground, both physical and virtual connectivity has come to a near standstill in this part of the country due to the joint effect of the cyclone and the ongoing pandemic. It has caused unprecedented damage throughout south 24 parganas, including Kolkata, after it made landfall near Sagar Island on the afternoon of May 20, 2020. The sundarban forest area was severely impacted after the landfall occurred damaging the villages.



<b>Condition in Kolkata</b>	<b>Condition of Villages in South 24 Parganas</b>
It is very rare in the history of modern India that one of the country's largest cities continues to stand in ruins, days after the cyclone. Many localities in the city, even within the COVID-19 containment zones, grapple with no power or water supply due to the cyclone. Many television and internet operators claim that restoration of connections could take weeks. The people staying in the slums are left with damages beyond imagination.	Several villages in South 24 Parganas such as in Canning, Diaond Harbour, Sonapota, Chougola and villages on remote islands of the Sunderbans have faced catastrophic damages.
Houses in slums are damaged (pakka house) the people are left with no source of income, no clean water, no roof. There is high chance of spreading of infectious disease not just corona due to unsanitized living condition in relief centres and locality after the water logging.	Many villages West Bengal are now facing an acute drinking water crisis, have lost their homes (paka houses), have left with no source of income, no roof over their head and no belongings to hold on to. Right now they are also at risk to get infected of infectious disease
Most of the people living in the slums are daily wage earners and due to the extension of lock down they are left with no saving on the verge of starvation and is not economically or mentally strong to rebuild their life's from scratch again	Most of the families in the villages are daily wage earners, fisherman or work in small shops due to the extension of lock down they are left with no saving on the verge of starvation and is not economically or mentally strong to rebuild their life's from scratch again

#### Support Required for project areas of:

- Sundarbans: Lodha Community and in affected villages at Gosaba
- Villages in Sonapota and Chougola
- Villages in Diamond Harbour
- Villages in Canning
- The 6 Slums which are most affected in Kolkata





### Field Need Assessment:

Post the cyclone the KMWSC field staff is working in the field to provide support to first hand and the office team visit each location to do a need assessment and evaluate the damages incurred. KMWSC has developed a uniform need list of the essential required to build up the life's of the effected people. The quantity and cost may vary depending on the need and the location.

Standardized Cyclone Support Kit					
Sl. no	CATEGORY : FOOD ITEM	Sl. no	CATEGORY : CLOTHINGS ITEM	Sl. no	CATEGORY : ESSENTIALS ITEM
1	PUFFED RICE	1	SAREES	1	SOAP
2	SATOO	2	LUNGIS	2	DETERGENT (KG)
3	FLATTENED RICE	3	GAMCHHA	3	SANITARY NAPKINS (PKT)
4	BATASHA	4	PETTICOTES	4	DETTOL
5	RICE	5	BLOUSE	5	COTTON
6	LENTIL	6	CHILDREN WARE	6	BANDAGE
7	SOYABEAN CHUNKS	Sl. no	CATEGORY : UTENCILS ITEM	7	BANDAID
8	COOKING OIL			Sl. no	CATEGORY : SHELTER ITEMS ITEM
9	SALT				
10	TURMERIC POWDER	1	HANDI		
11	CHILLI POWDER	2	KADAI	1	TARPOULINE (PCS)
12	JEERA POWDER	3	STOVE	2	MATS (PCS)
13	POTATOES	4	STEEL TUMBLER	3	TIN SHEETS (PCS)
14	HORLICKS	5	BUCKET WITH LID	4	NYLON ROPE (PCS)
15	BISCUITS	6	PLASTIC MUG	5	MOSQUITO NETS (PCS)
		7	STEEL GLASS WITH HANDLE	6	SAND (BAGS)
		8	LEDEL (2)sets	7.	BRICKS
		9	STEEL PLATES	8.	CEMENT
				9.	LABOUR CHARGES
				10.	ASBESTOS

